

**NC Drill**

Root file name:  ...

Scale factor:

Tool sequence:  Increasing  Decreasing

Auto tool select

Separate files for plated/non-plated holes

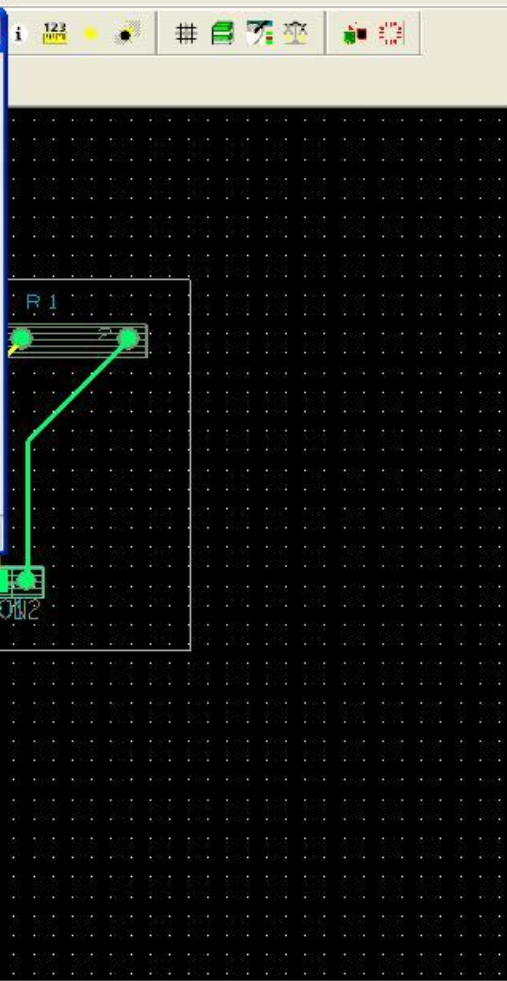
Repeat codes

Optimize drill head travel

Drilling:

Layer pair  By layer

Buttons: Drill, NC Parameters..., Close, Cancel, View Log, Help



Options Find Visibility

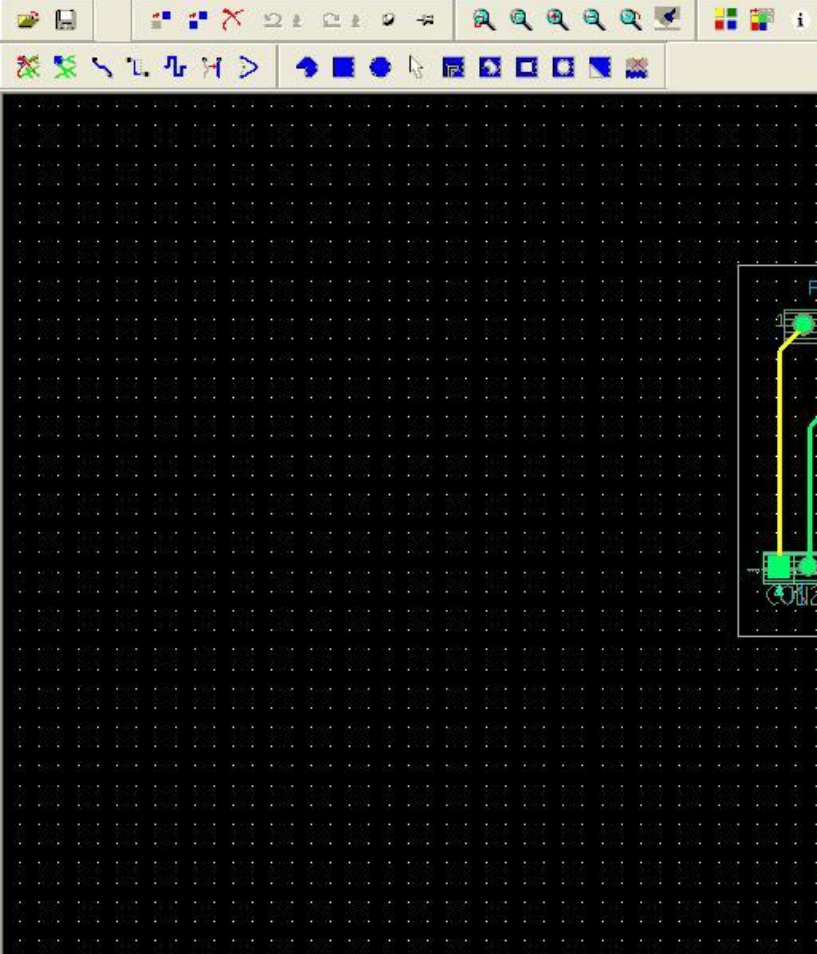
Active Class and Subclass:

Board Geometry

Outline

Checked 100 percent  
 Done dbdoctor.  
 Starting Create artwork films...  
 artwork completed successfully - use Viewlog to review the log file.  
 Command >

Cmd: nctape\_full  
   
 Stop



**Artwork Control Form**

Film Control General Parameters

Device type

Gerber 6x00

Gerber 4x00

Gerber RS274X

Barco DPF

MDA

Film size limits

Max X:

Max Y:

Coordinate type

Not applicable

Error action

Abort film

Abort all

Format

Integer places:

Decimal places:

Output options

Not applicable

Suppress...

Leading zeroes

Trailing zeroes

Equal coordinates

Output units

Inches

Millimeters

Continue with undefined apertures

Scale factor for output:

Buttons: OK, Cancel, Apertures..., Viewlog..., Help

Checked 100 percent  
 Done dbdoctor.  
 Starting Create artwork films...  
 artwork completed successfully - use Viewlog to review the log file.  
 Command >

Cmd: artwork  
   
 Stop

PCB Designer: test.brd Project: C:\.../Desktop/TEST/allegro

File Edit View Add Display Setup Shape Logic Place Route Manufacture Tools Help

123

### Artwork Control Form

Film Control | General Parameters

Available films

- ASSYBOT
- ASSYTOP
- BOTTOM
- DRILLDWG
- PASTEBOTTOM
- PASTETOP
- SILKBOTTOM
- SILKTOP
- SMASKBOT
- SMASKTOP
- TOP

Select all Load...

Check database before artwork

Create Artwork

Film options

Film name: SILKBOTTOM

Rotation: 0

Offset X: 0.00  
Y: 0.00

Undefined line width: 10.00  
Shape bounding box: 100.00

Plot mode:  Positive  Negative

Film mirrored  
 Full contact thermal-reliefs  
 Suppress unconnected pads  
 Draw missing pad apertures  
 Use aperture rotation  
 Suppress shape fill  
 Vector based pad behavior

OK Cancel Apertures... Viewlog... Help

Checked 100 percent  
Done dbdoctor.  
Starting Create artwork films...  
artwork completed successfully - use Viewlog to review the log file.  
Command >

Cmd: artwork  
20641.00, 9176.00  
Stop

start

PCB Designer: test.brd Project: C:\.../Desktop/TEST/allegro

File Edit View Add Display Setup Shape Logic Place Route Manufacture Tools Help

### NC Parameters

Parameter file: C:/Documents and Settings/...

Output file:

Header: none

Leader: 12

Code:  ASCII  EIA

Excellon format:

Format: 2 3

Offset X: 0.00 Y: 0.00

Coordinates:  Absolute  Incremental

Output units:  English  Metric

Leading zero suppression  
 Trailing zero suppression  
 Equal coordinate suppression  
 Enhanced Excellon format

Close Cancel Help

Options Find Visibility

Active Class and Subclass:

Board Geometry

Outline

Cmd: Idle  
20903.00, 11672.00  
Stop

Checked 100 percent  
Done dbdoctor.  
Starting Create artwork films...  
artwork completed successfully - use Viewlog to review the log file.  
Command >

Cmd: Idle  
20903.00, 11672.00  
Stop

start

10:58 AM